

How It Works:

Referral: Students may sign up themselves, or be referred by school staff or through screeners.

Orientation: Student & parent/guardian meet with the program team to learn what to expect.

Assessment: A BHS provider decide the best level of support.

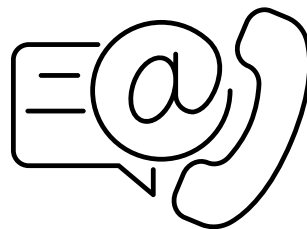
Sessions:

- 24 total hours (flexible with school schedule)
- Small groups of up to 20 students

Completion: Students will receive a Certificate of Completion and the School will be notified. 

Follow-Up: School counselors will keep supporting students after the program.

GET IN TOUCH



Contact Number:
1-671-300-1623

Email Address:
BHS@GDOE.NET

WEBSITE:

<https://www.gdoe.net/District/Department/9-Student-Support-Services-Division-SSSD>

We're here to help you stay strong, bounce back, and move forward.



MINESNGON FAMAGU'ON (RESILIENT CHILDREN) PROGRAM

Guam Department of
Education - School Based
Behavioral Health (SBBH)



**Minesngon Famagu'on
(Resilient Children),
formally the
Substance Use
Intervention Program,
is offered to GDOE
secondary schools.**






**Helping students build
strength, resilience,
and healthy choices.**



Program Services:

**The program offers
individual or group sessions
to help student's learn, grow,
and recover.**

Student's gain:

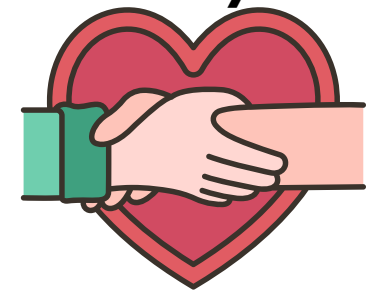
-  **Education & guidance**
-  **Coping and recovery skills**
-  **Personal growth tools**
-  **Relapse prevention strategies**
-  **Support from peers and counselors**



Who's Eligible:

**Students can join the
program through:**

- **Self-referral**
- **Office Discipline Referrals (ODR)**
- **Mental health screeners (students who score within the moderate or severe range on the S2BI)**
- **Child Study Team (CST)**



 **Why Join?**

- **Feel supported**
- **Learn ways to stay strong and make healthy choices**
- **Build skills for a better future**
- **Know you're not alone** 